



\$90K

IN MATERIALS DONATED TO 48 NONPROFITS IN 2019

1,282,378

POUNDS DIVERTED FROM LANDFILLS IN 2019

6,621,174

POUNDS OF USABLE MATERIALS SAVED SINCE 2011



\$715K

DOLLARS SAVED IN 2019 BY SHOPPERS AT LBC'S REUSE CENTER

2019 YEAR IN REVIEW

LIFECYCLE BUILDING CENTER

NONPROFIT MATERIAL MATCH PROGRAM

WORKFORCE DEVELOPMENT PARTNER: GEORGIA WORKS!



9/14/19 HOME PERFORMANCE WORKSHOP SPONSORED BY:



15 MEN RECEIVED JOB TRAINING IN 2019

60 GEORGIA WORKS! PROGRAM PARTICIPANTS TRAINED TO DATE

279 NONPROFIT MATERIAL MATCH GRANTS AWARDED TO DATE

12 FREE EDUCATIONAL WORKSHOPS IN 2019

252 PARTICIPANTS ATTENDED **100** OF THEM WERE KIDS

AS SEEN ON TV:

46.6 TONS

OF MATERIAL DONATED BY 20TH TELEVISION
DECONSTRUCTED SETS FROM THE GIFTED • THE PASSAGE • STAR

\$200K EPA BROWNFIELD CLEANUP COMPLETED IN 7 MONTHS

2019 CARPET TILE GRANT EXAMPLES:

WE FIND THE COOLEST THINGS!

6,000^{SF}

FRIENDS OF REFUGEES

4,000^{SF}

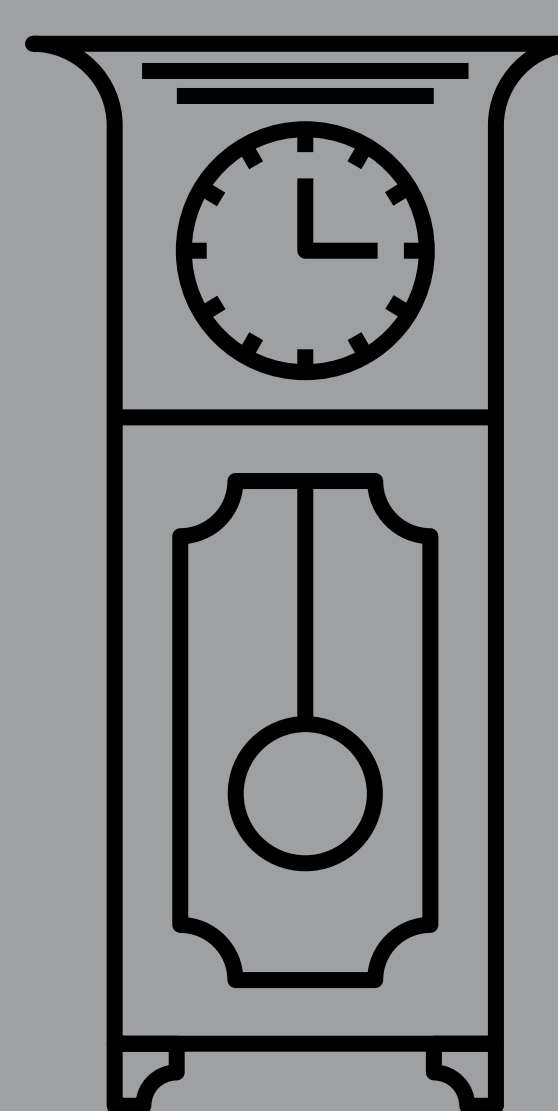
BOYS & GIRLS CLUB ATLANTA

2,000^{SF}

NEW LIFE AME CHURCH

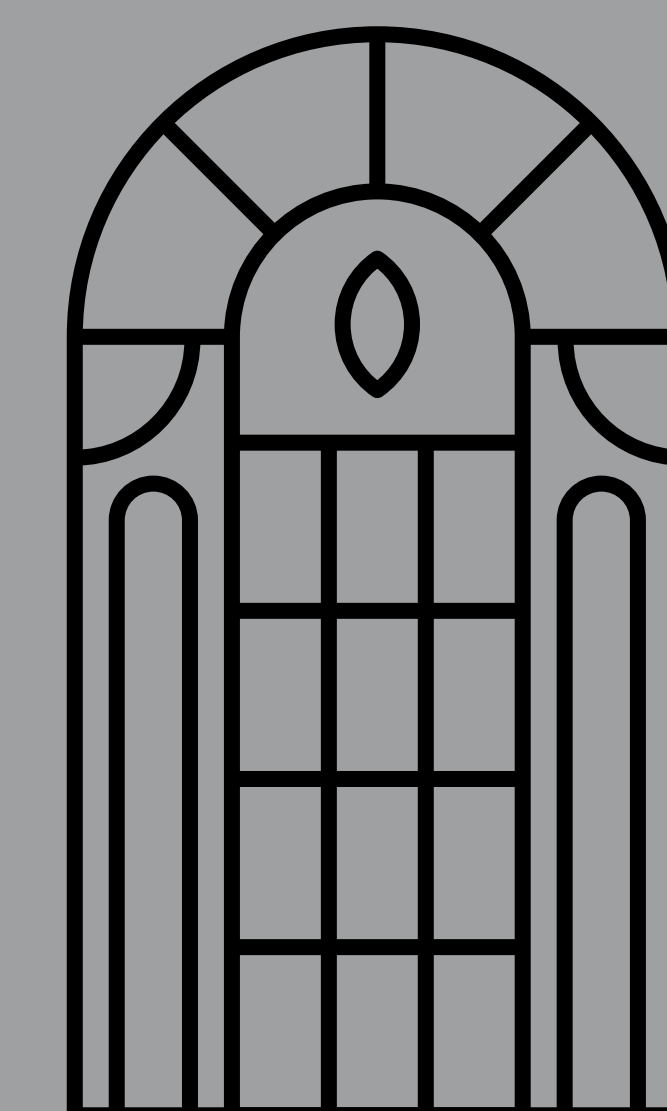
1,600^{SF}

HEALTHY MOTHERS, HEALTHY BABIES



ANTIQUE GRANDFATHER CLOCK

(CIRCA 1780'S) FROM SHREWSBURY, ENGLAND RECLAIMED FROM A BUCKHEAD HOME AND LOVINGLY RECEIVED BY AN AUTHOR LIVING NEAR LBC



STAINED GLASS

RECLAIMED FROM 1915 ST. PAUL'S EPISCOPAL CHURCH; HOME OF ATLANTA'S FIRST UNITARIAN CONGREGATION AND LATER A RENOWNED RESTAURANT, THE ABBEY.

55,044

SQUARE FEET OF CARPET TILE SAVED FROM DISPOSAL IN 2019

THAT'S ENOUGH TO COVER AN ENTIRE FOOTBALL FIELD!

2019 REVEL IN REUSE ANNUAL FUNDRAISER

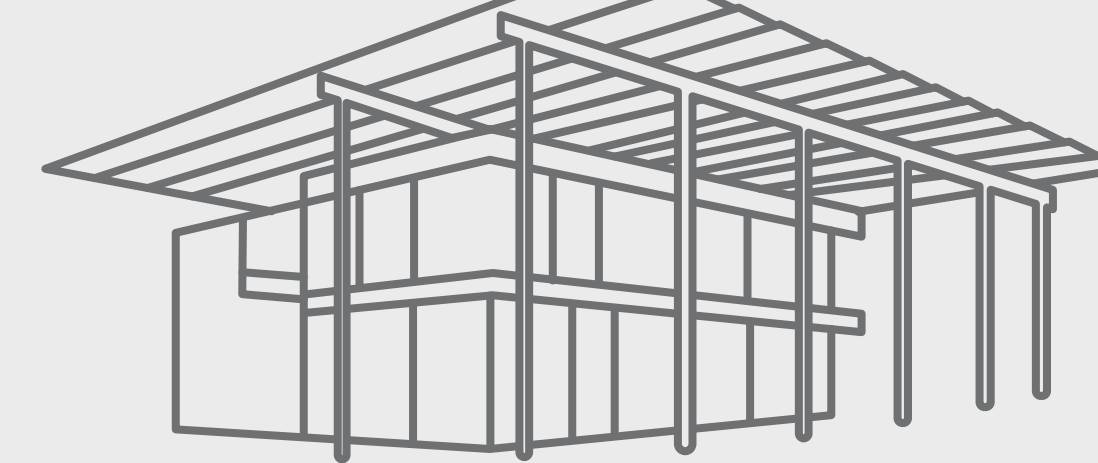
SPECIAL THANKS TO:



\$133,000

RAISED TO SUPPORT LBC'S PROGRAMS

KENDEDA BUILDING @ GT

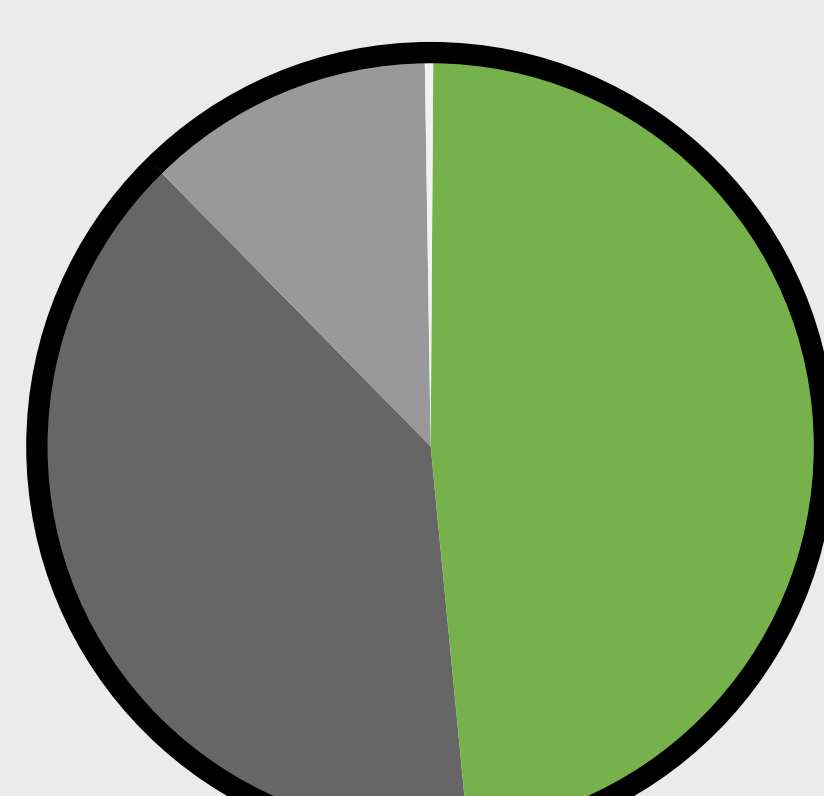


INCOME

EXPENSES

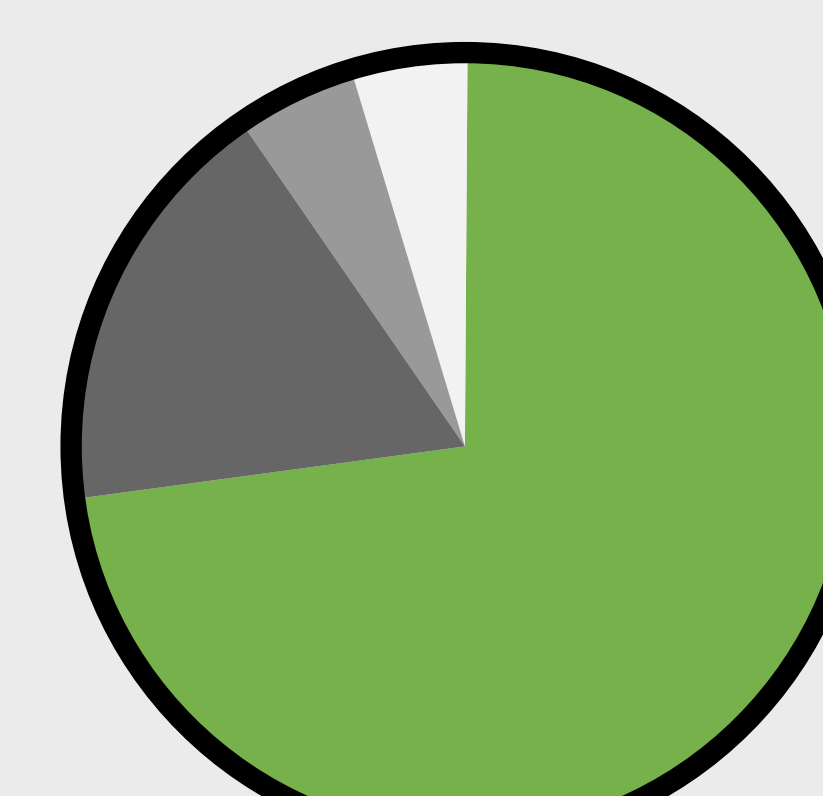
150

BIRDHOUSE KITS CREATED FOR 2019 RAYDAY DO-IT-YOURSELF WORKSHOP BY:



- EARNED INCOME: \$721,551
- CONTRIBUTIONS & GRANTS: \$588,013
- EVENTS: \$178,834
- CONTRIBUTED GOODS & SERVICES: \$2,191

TOTAL: \$1,490,589



- PROGRAM SERVICES: \$827,838
- RESOURCE DEVELOPMENT: \$199,084
- GENERAL & ADMINISTRATIVE: \$55,177
- MARKETING & OUTREACH: \$54,353

TOTAL: \$1,136,452

68 DECON PROJECTS

326 FREE PICKUPS

497 DONATION DROPOFFS



2019 LBC STAFF



Shannon Goodman
Executive Director

Catherine Crowell
Director of Operations
Started Dec 2019

David Bedingfield
Reuse Center Manager

Laurel Crafts
Reuse Center Associate

Erin Gallagher
Programs & Outreach Manager
Promoted in 2019!

Karim Nelson
Senior Reuse Associate

Jahbari Swint
Reuse Center Associate

Evander Robinson
Reuse Center Associate

Glenn Schambeau
Deconstruction & Donations Manager

Robert Lemmons
Reuse Center Associate

Tracy Young
Deconstruction Associate

Chris Hamilton
Director of Operations
through May 2019

Jamarius McKibben
Reuse Center Associate

Ashley Miller
Marketing & Communications Coordinator

Stephanie Shapiro
Director of Development

Courtney Gibson
Reuse Center Associate

THANK YOU TO ALL OF OUR DONORS AND SPONSORS FOR SUPPORTING LBC'S MISSION AND CREATING SO MUCH POSITIVE IMPACT IN OUR COMMUNITY

- 10TH STREET VENTURES
- AEC TRUST
- ANNING-JOHNSON
- ARTHUR M BLANK FOUNDATION
- ATLANTIC CAPITAL BANK
- AXIOM COMMUNICATIONS
- BATCHELOR & KIMBALL
- BRASINGTON BAILEY
- BRIGHT WINGS FOUNDATION
- BUILDERS 2020
- BURDETTE FAMILY FOUNDATION
- CADENCE BANK
- CAT MEDIA
- CDI USA
- DAIKIN
- DORSEY FOUNDATION
- DPR
- DRAGON CON FUND
- DWELL DESIGN STUDIO
- EBERLY & ASSOCIATES
- ELEMENTAL GREEN HOMES
- EPIC PARTNERS
- EWASTE EPLANET
- FARIST CONSULTING

- FARNSWORTH GROUP
- GEHEBER LEWIS ASSOCIATES
- GENSLER
- GEORGIA POWER COMPANY
- H+H INSURANCE SERVICES
- HOLDER CONSTRUCTION
- INGLETT & STUBBS
- INTEGRAL CONSULTING ENGINEERING
- INVEST ATLANTA
- JE DUNN CONSTRUCTION
- JUNEAU CONSTRUCTION
- LEAPLEY CONSTRUCTION
- LEE + WHITE
- LIVINGSTON FOUNDATION
- LORD AECK SARGENT
- LOW-INCOME INVESTMENT FUND
- MCKENNEY'S
- NEW SOUTH CONSTRUCTION
- NEWCOMB & BOYD
- PATTERSON SERVICES
- PERENNIAL PROPERTIES
- PERKINS+WILL
- PRODUCERS GUILD OF AMERICA FOUNDATION
- RAO AND RANI VARANASI FUND

- RAY C ANDERSON FOUNDATION
- RAYDEO
- RENASANT BANK
- ROSLING PAINT
- RUSSELL LANDSCAPING
- SIVERTON MORTGAGE
- SK COLLABORATIVE
- SOUTH CITY PARTNERS
- SOUTHERN DEMOLITION & ENVIRONMENTAL
- SPECTRA FLOORING / MILLIKEN
- SURBER BARBER CHOATE & HERTLEIN
- THE MCGILL COMPANY
- TILLERMAN, LLC
- TOM BARROW COMPANY
- TRINITY PRESBYTERIAN CHURCH
- TURNER FOUNDATION
- URBAN REALTY PARTNERS
- VALET WORKS
- VASSER-WOOLLEY FOUNDATION
- WALTER AND JUDY HOYT FAMILY FUND
- WALTER P MOORE
- WELLS FARGO FOUNDATION
- WORKING BUILDINGS

FULL 2019 DONOR LIST AT LIFECYCLEBUILDINGCENTER.ORG/OUR-SUPPORTERS