



\$90K

IN MATERIALS DONATED TO 48 NONPROFITS IN 2019

1,282,378

POUNDS DIVERTED FROM LANDFILLS IN 2019

6,621,174

POUNDS OF USABLE MATERIALS SAVED SINCE 2011



\$715K

DOLLARS SAVED IN 2019 BY SHOPPERS AT LBC'S REUSE CENTER

2019 YEAR IN REVIEW

LIFECYCLE BUILDING CENTER

NONPROFIT MATERIAL MATCH PROGRAM

WORKFORCE DEVELOPMENT PARTNER:

GEORGIA WORKS!



9/14/19 HOME PERFORMANCE WORKSHOP SPONSORED BY:



15 MEN RECEIVED JOB TRAINING IN 2019

60 GEORGIA WORKS! PROGRAM PARTICIPANTS TRAINED TO DATE

279 NONPROFIT MATERIAL MATCH GRANTS AWARDED TO DATE

12 FREE EDUCATIONAL WORKSHOPS IN 2019

252 PARTICIPANTS ATTENDED **100** OF THEM WERE KIDS

AS SEEN ON TV:

46.6 TONS

OF MATERIAL DONATED BY 20TH TELEVISION
DECONSTRUCTED SETS FROM THE GIFTED • THE PASSAGE • STAR

\$200K

EPA BROWNFIELD CLEANUP COMPLETED IN 7 MONTHS

2019 CARPET TILE GRANT EXAMPLES:

WE FIND THE COOLEST THINGS!

6,000^{SF}

FRIENDS OF REFUGEES

4,000^{SF}

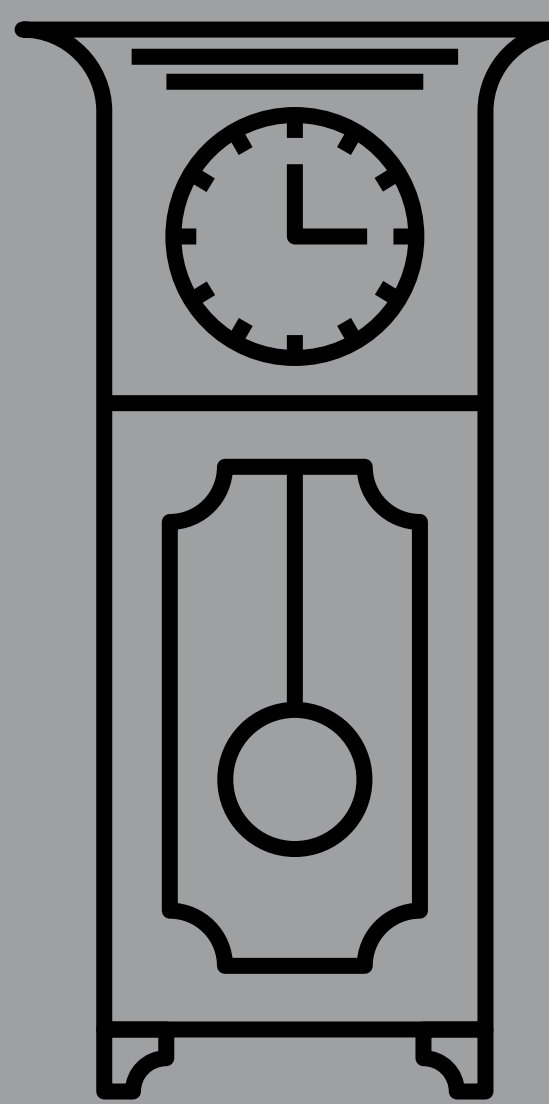
BOYS & GIRLS CLUB ATLANTA

2,000^{SF}

NEW LIFE AME CHURCH

1,600^{SF}

HEALTHY MOTHERS, HEALTHY BABIES

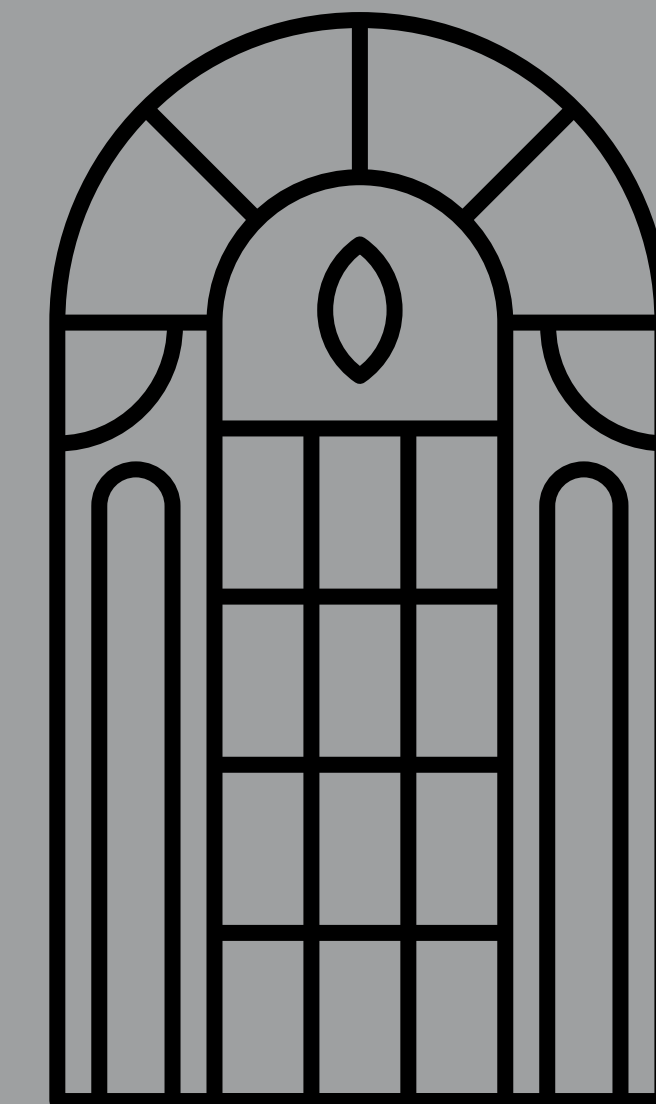


ANTIQUE GRANDFATHER CLOCK

(CIRCA 1780'S) FROM SHREWSBURY, ENGLAND RECLAIMED FROM A BUCKHEAD HOME AND LOVINGLY RECEIVED BY AN AUTHOR LIVING NEAR LBC

STAINED GLASS

RECLAIMED FROM 1915 ST. PAUL'S EPISCOPAL CHURCH; HOME OF ATLANTA'S FIRST UNITARIAN CONGREGATION AND LATER A RENOWNED RESTAURANT, THE ABBEY.



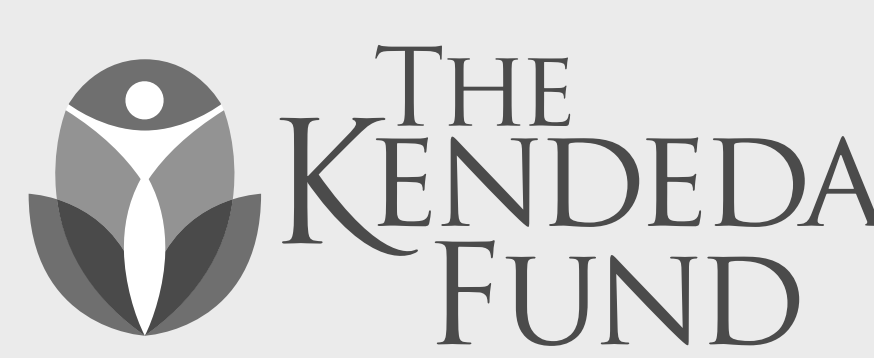
55,044

SQUARE FEET OF CARPET TILE SAVED FROM DISPOSAL IN 2019

THAT'S ENOUGH TO COVER AN ENTIRE FOOTBALL FIELD!

2019 REVEL IN REUSE ANNUAL FUNDRAISER

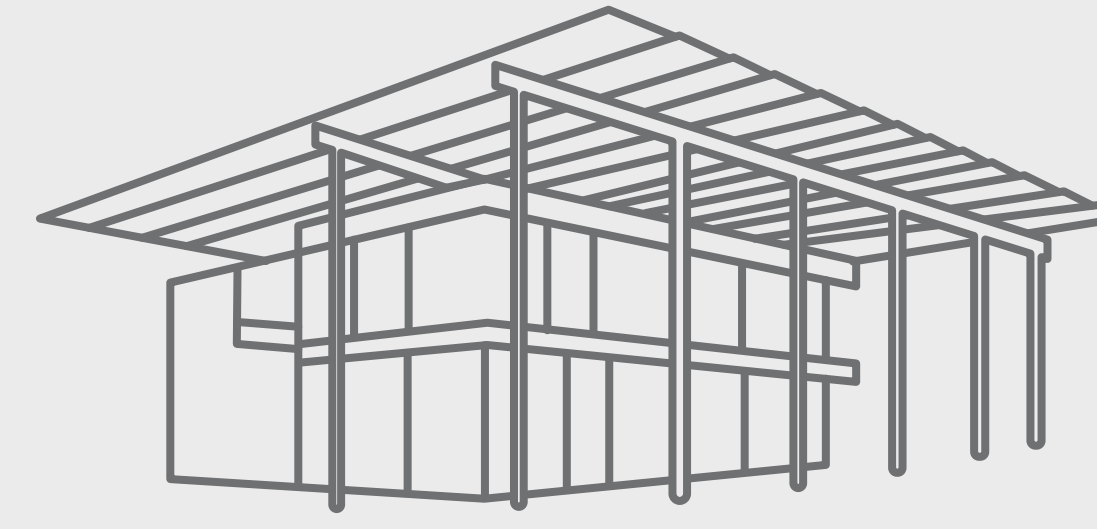
SPECIAL THANKS TO:



\$133,000

RAISED TO SUPPORT LBC'S PROGRAMS

KENDEDA BUILDING @ GT

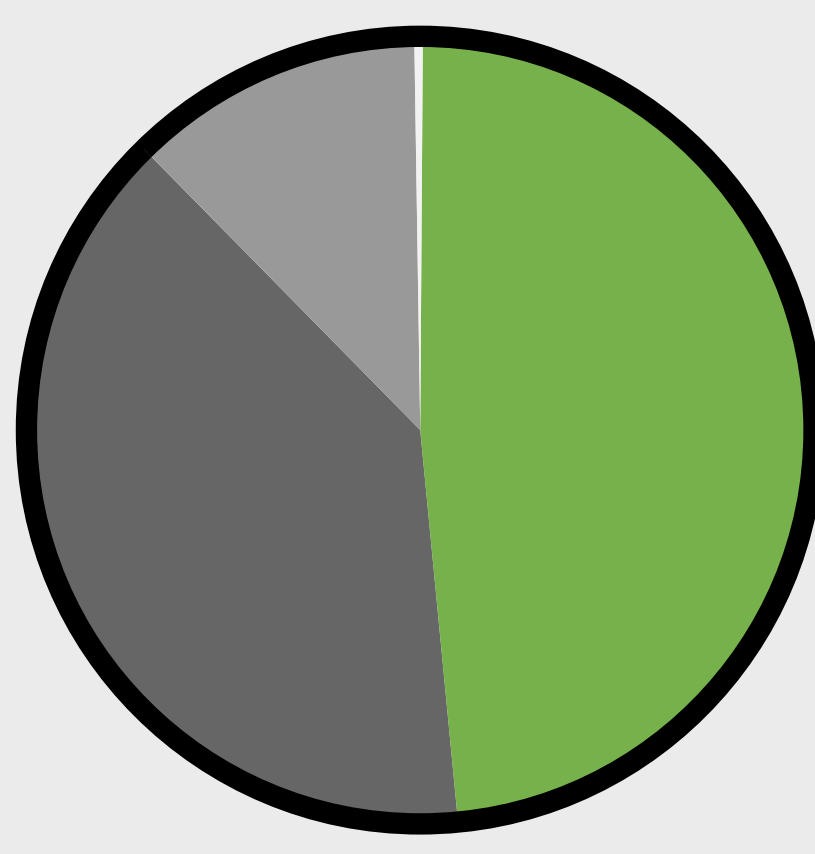


INCOME

EXPENSES

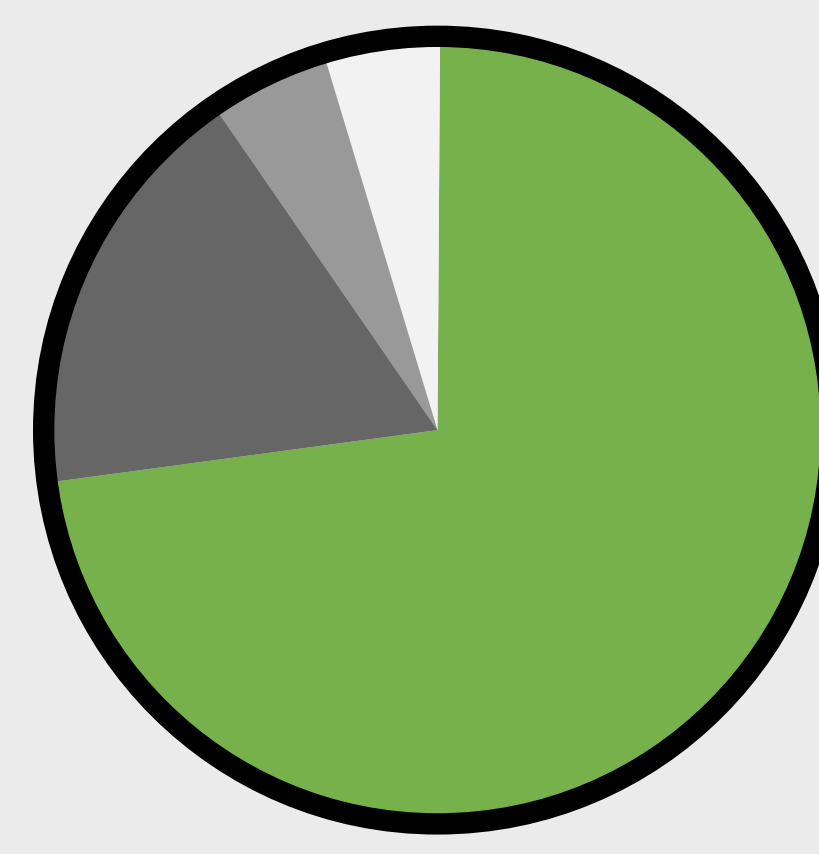
150

BIRDHOUSE KITS CREATED FOR 2019 RAYDAY DO-IT-YOURSELF WORKSHOP BY:



TOTAL: \$1,490,589

- EARNED INCOME: \$721,551
- CONTRIBUTIONS & GRANTS: \$588,013
- EVENTS: \$178,834
- CONTRIBUTED GOODS & SERVICES: \$2,191



TOTAL: \$1,136,452

- PROGRAM SERVICES: \$827,838
- RESOURCE DEVELOPMENT: \$199,084
- GENERAL & ADMINISTRATIVE: \$55,177
- MARKETING & OUTREACH: \$54,353

68 DECON PROJECTS

326 FREE PICKUPS

497 DONATION DROPOFFS



2019 LBC STAFF



Shannon Goodman
Executive Director

Catherine Crowell
Director of Operations
Started Dec 2019

David Bedingfield
Reuse Center Manager

Laurel Crafts
Reuse Center Associate

Erin Gallagher
Programs & Outreach Manager
Promoted in 2019!

Karim Nelson
Senior Reuse Associate

Jahbari Swint
Reuse Center Associate

Evander Robinson
Reuse Center Associate

Glenn Schambeau
Deconstruction & Donations Manager

Robert Lemmons
Reuse Center Associate

Tracy Young
Deconstruction Associate

Chris Hamilton
Director of Operations
through May 2019

Jamarius McKibben
Reuse Center Associate

Ashley Miller
Marketing & Communications Coordinator

Stephanie Shapiro
Director of Development

Courtney Gibson
Reuse Center Associate

THANK YOU TO ALL OF OUR DONORS AND SPONSORS FOR SUPPORTING LBC'S MISSION AND CREATING SO MUCH POSITIVE IMPACT IN OUR COMMUNITY

10TH STREET VENTURES
AEC TRUST
ANNING-JOHNSON
ARTHUR M. BLANK FOUNDATION
ATLANTIC CAPITAL BANK
BATCHELOR & KIMBALL
BRIGHT WINGS FOUNDATION
BUILDERS 2020
BURDETTE FAMILY FOUNDATION
CADENCE BANK

CAT MEDIA
CDI USA
DAIKIN
DORSEY FOUNDATION
DPR
DRAGON CON FUND
DWELL DESIGN STUDIO
EBERLY & ASSOCIATES
EPIC PARTNERS
EWASTE EPLANET

GEHEBER LEWIS ASSOCIATES
GENSLER
GEORGIA POWER COMPANY
H-H INSURANCE SERVICES
HOLDER CONSTRUCTION
INTEGRAL CONSULTING ENGINEERING
INVEST ATLANTA
JE DUNN CONSTRUCTION
LEAPLEY CONSTRUCTION
LEE-WHITE / ACKERMAN & CO.

LIVINGSTON FOUNDATION
LORD AECK SARGENT
LOW-INCOME INVESTMENT FUND
MCKENNEY'S
NEW SOUTH CONSTRUCTION
PATTERSON SERVICES
PERENNIAL PROPERTIES
PERKINS-WILL
PRODUCERS GUILD OF AMERICA
FOUNDATION

RAO AND RANI VARANASI FUND
RAY C. ANDERSON FOUNDATION
RAYDEO
RENASANT BANK
RUSSELL LANDSCAPING
SOUTH CITY PARTNERS
SPECTRA FLOORING / MILLIKEN
SURBER BARBER CHOATE & HERTLEIN
THE MCGILL COMPANY

TOM BARROW COMPANY
TRINITY PRESBYTERIAN CHURCH
TURNER FOUNDATION
URBAN REALTY PARTNERS
VALET WORKS
VASSER-WOOLLEY FOUNDATION
WALTER AND JUDY HOYT FAMILY FUND
WALTER P. MOORE
WELLS FARGO FOUNDATION
WORKING BUILDINGS

FULL 2019 DONOR LIST AT LIFECYCLEBUILDINGCENTER.ORG/OUR-SUPPORTERS